



# PRODUCT SHEET

ARTICLE NUMBER: GAT5255

DESCRIPTION: PSA EB2 1.2 GDI PureTech Engine Timing Check Kit

## INTRODUCTION

The PSA Group EB2 PureTech engine installed in a range of Citroen / DS, Peugeot, Opel and Vauxhall models has undergone a re-design from 2018 to facilitate a HP GDI fuel system. Although this resulted in some architectural differences it still utilises a timing belt running in an oil mist design, known as belt-in-oil. There is a known concern that the belt-in-oil may exhibit swelling or bloating and / or deterioration from abrasion before the service / replacement interval is due.

GAT5255 kit will enable the physical checking of the belt width for signs of swelling and the locking tools will enable a check to confirm if the belt has jumped as a direct result of deteriorated teeth by confirming the crankshaft, inlet and exhaust cams are still correctly timed. The timing belt width should be checked in line with manufacturers recommended intervals.

**IMPORTANT:** A visual inspection of the belt through the oil filler cap opening should be carried out to check the timing belt for signs of frayed edges, cracking of the belt structure, missing material and any other signs of wear.

If the timing belt requires replacement, further component removal will be necessary, e.g., GDI fuel pump, HP pipe and fuel rail, cylinder head lower cover, camshaft dephasers and pulleys, front crank pulley etc. In this instance the GAT5148A remains the engine setting/locking kit, and **MUST** be used for belt replacement, camshaft, valve and cylinder head service work.

## CONTENT

CONTENT	ITEM	ARTICLE NUMBER	DESCRIPTION	OE REFERENCE
1	7468-11262	GAT5249	Timing Belt Test Gauge	G-0109-6
2	7468-11284	GAT5256	Camshaft Timing Locking Tools	0109-2C / 0109-2D
3	7468-11266	GAT5021	Crankshaft Locking Pin	0109-2B / 0197-N / EN-52127-2

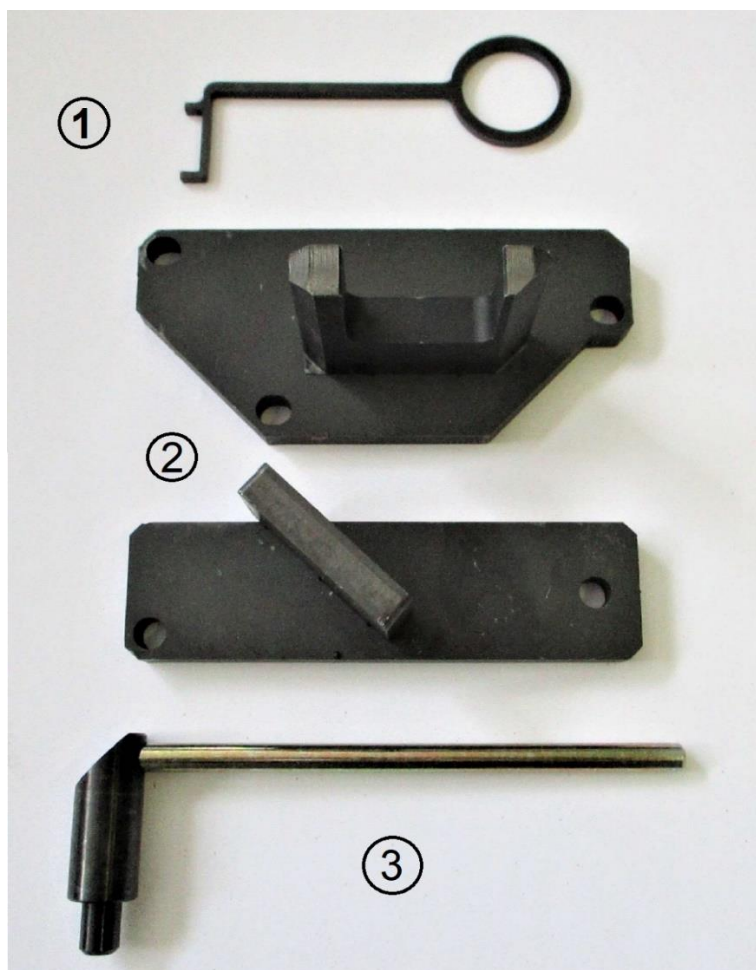


# PRODUCT SHEET

## APPLICATION INFO

ENGINE CODE	BRAND	MODEL			
D12XHT	CITROËN	208	Berlingo IV	C5 Aircross	DS3 II
EB2ADT	DS	2008	C3 Aircross	Combo-E	DS7 Crossback
EB2ADTD	OPEL	308	C IV	Combo-E Life	Grandland X
EB2ADTS	PEUGEOT	3008	C4 Cactus	Corsa-F	Partner IV
EB2ADTX	VAUXHALL	508	C4 SpaceTourer	Crossland X	Rifter
F12XHT		5008	C4 Grand SpaceTourer	DS3 Crossback	

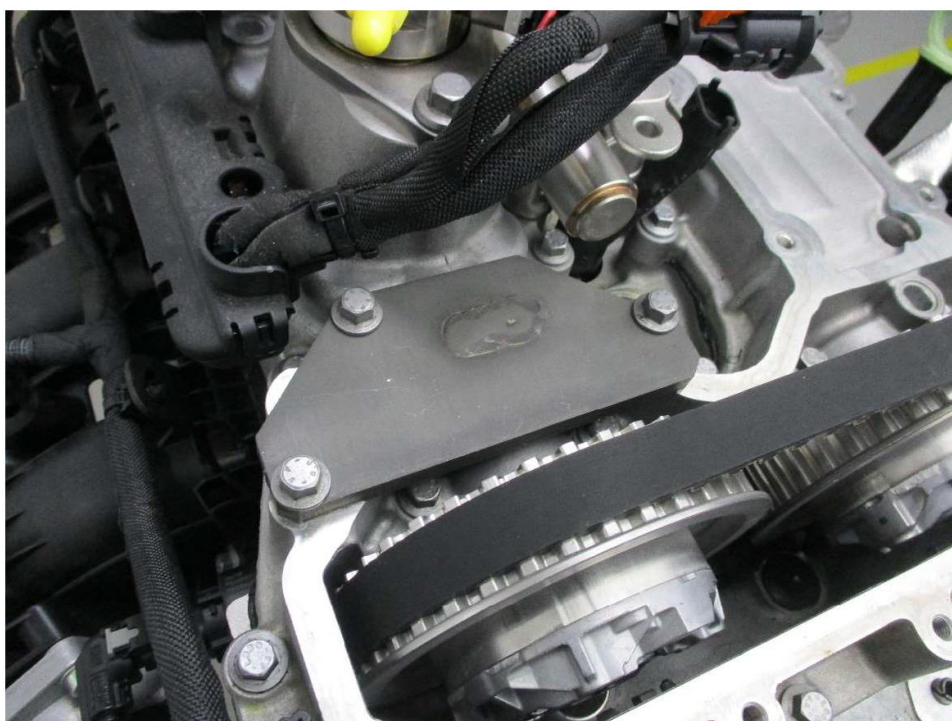
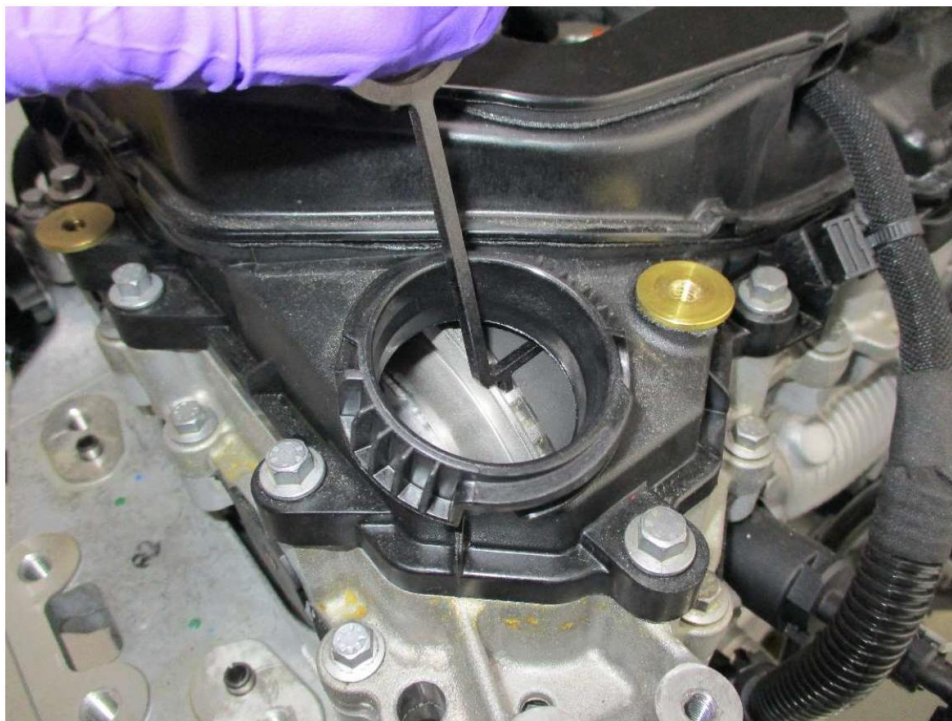
## KIT CONTENT IMAGE





# PRODUCT SHEET

Application image







# PRODUCT SHEET



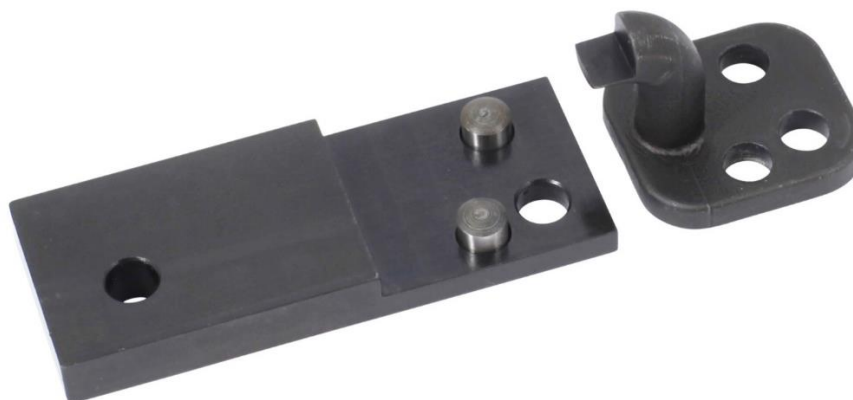


# PRODUCT SHEET

## Associated Tools



7468-12001 - GAT5148A - Engine Setting / Locking Tool Kit



7468-11308 – GAT5257 – Camshaft Locking Tool



# PRODUCT SHEET



7468-11290 – GAT5257 – Crank Seal Installer



7468-11253 - GAT4939 - Universal Handle for Crankshaft Pulley Holding Tool



7468-11268 - GAT5139 - Crankshaft Hub Holding Tool