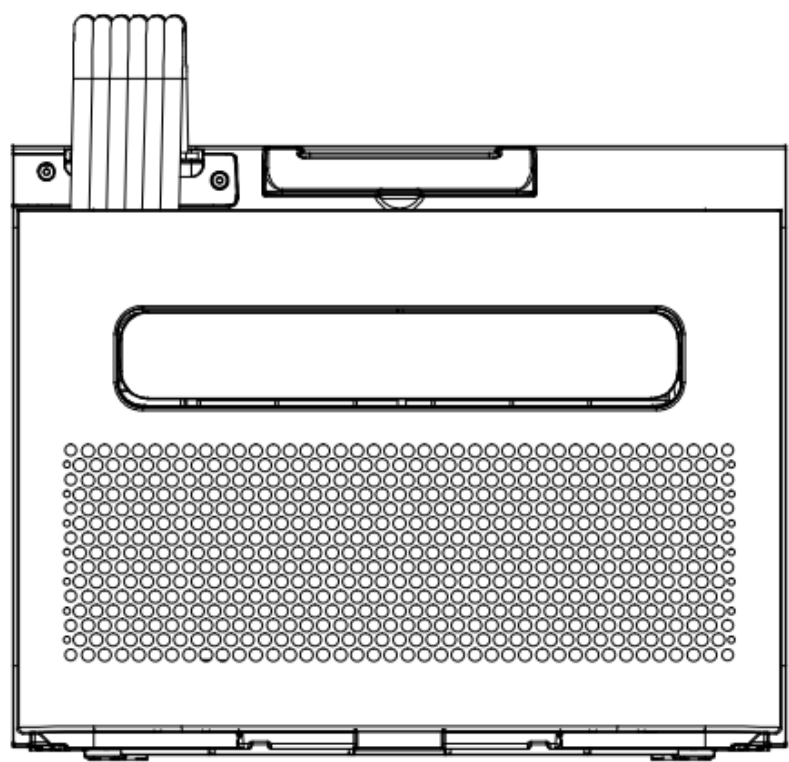


USER MANUAL



Portable split air conditioner

YFE-05H/3-W

1. SAFETY INSTRUCTIONS	2
2. TECHNICAL DATA	4
3. PACKING LIST	4
4. DESIGNATION OF PARTS	5
5. OPERATION OF CONTROL PANEL	6
6. INSTALLATION OF THE AIR CONDITIONER	7
7. ERROR CODE LIST	10
8. TROUBLE SHOOTING GUIDE	10
9. MAINTENANCE	11
10. SMART HOME WIFI CONNECTION GUIDE	132

## 1. SAFETY INSTRUCTIONS

### IMPORTANT!

AIR CONDITIONERS MUST ALWAYS BE STORED AND TRANSPORTED UPRIGHT, OTHERWISE IRREPAIRABLE DAMAGE MAY BE CAUSED TO THE COMPRESSOR. IF UNSURE ABOUT HOW THE APPLIANCE WAS STORED OR TRANSPORTED, PLEASE WAIT AT LEAST 24 HOURS BEFORE STARTING THE UNIT AFTER IT HAS BEEN INSTALLED.



### Warning

When using this air conditioner, it is important that you always adhere to safety regulations. This prevents the risk of personal injury, electric shock, and damage to the product. Please read all instructions carefully before use.

- Read the manual before use.
- The manufacturer is not liable for any damage or injury resulting from the misuse of this device or from not adhering to the safety instructions.
- Keep the manual, warranty certificate, and sales receipt for future reference.
- Children should not play with the appliance and need to be supervised at all times if using it.
- This appliance is not intended to be used by children under 8 years of age or by persons with limited physical, sensory, or mental capabilities or insufficient experience and knowledge, unless they are assisted or have been instructed on how to use the appliance safely and correctly.
- Do not insert fingers or any hard object into the air outlet.
- The power cord and plug should never be used if damaged. Never attempt repairs yourself if the appliance, the cord, or the plug is damaged. Always have repairs done by the manufacturer or a qualified technician.
- The appliance is not suitable for commercial use.
- Always use and store the appliance in a dry place.
- Never use accessories that are not recommended by the manufacturer.
- Recommended environment temperature for operation: 10–35 °C.
- This appliance is only suitable for caravan use and should only be used as intended.
- Never modify this product or any parts of it.
- Never connect multiple electrical appliances to a single power outlet. This causes an unstable connection and high heat load.
- **Keep the appliance at least 2 meters from any possible ignition or power sources to prevent fire hazards.**
- **There should be at least 50 cm of free space in front of the appliance and at least 20 cm of free space to the left and right of the appliance.**
- **It is strictly forbidden to add refrigerant yourself.**
- **Do not pull the hose or use sharp objects on it. If the hose is damaged, stop using the appliance immediately and contact a repair technician.**
- Type and rating of fuse: 250VAC, T3.15A

### **Installation location of the air conditioner**

The air conditioner must be installed on a firm, flat surface (note: the air conditioner must not be tilted) when it is in use. This air conditioner may not be installed in the following places:

- Near strong heat sources, vapours, or flammable or explosive gas.
- In an environment that contains chemicals (evaporating substances, organic solvents, etc.).
- Near an open window if it is raining outside.

### **Also take the following regulations into account:**

- The product must be kept upright at all times and in all cases. Do not hold the device sideways or upside down.
- Try to keep the air conditioner straight when moving or carrying it. Make sure not to shake or drop it.
- Make sure the air supply is not clogged and is in good condition.
- Do not insert any objects through the openings of the air inlet and outlet. The objects can reach electrical parts or the fan, which can be very dangerous.
- Do not place heavy objects on the product.
- Remove the plug from the socket before moving the air conditioner, performing maintenance on it, cleaning it, or storing it.
- Do not move the appliance by pulling the cord or plug.
- Clean the dust filter of the air intake screen at least once a month.
- If the appliance will be unused for a long time, it must be stored in a cool and dry place. Clean

and dry the air conditioner well before storing.

- To avoid water leakage, make sure the tank is empty before moving it.

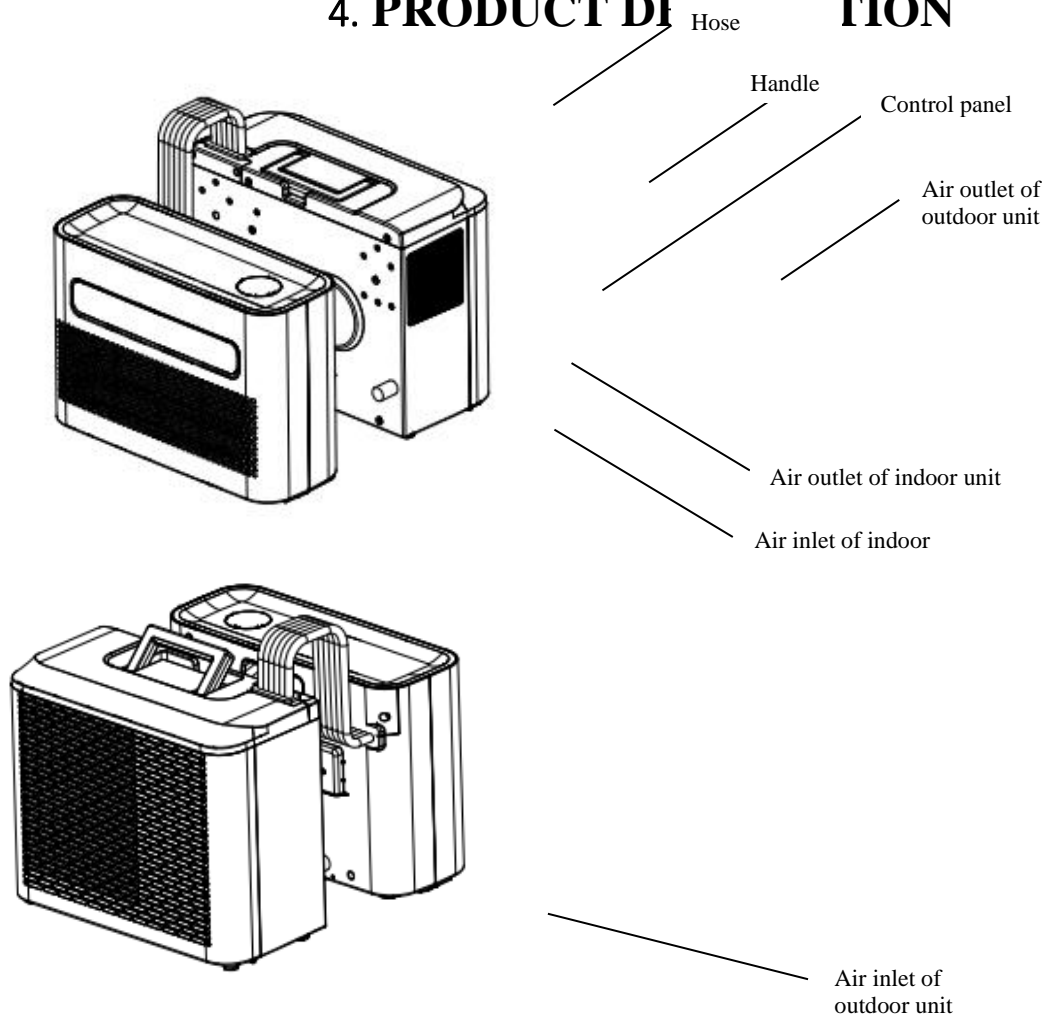
## 2. TECHNICAL DATA

Voltage	220~240 V 50/60 Hz	Air flow capacity	140-200 m <sup>3</sup> /h
Cooling capacity	5000 btu/h (1465 W)	Dehumidification capacity	0.5 l/h
Heating capacity	5000 btu/h (1465 W)	Isolation Class (for outside unit)	IPX4
Cooling Power	560 W	Refrigerant	R290, 130 g
Heating Power	560 W	Compressor type	Rotor type
Dimensions of the inside unit	455×182×328 mm	Sound pressure level (for indoor unit)	46 dB
Dimensions of the outside unit	460×222×363 mm	Net weight	20.5 kg

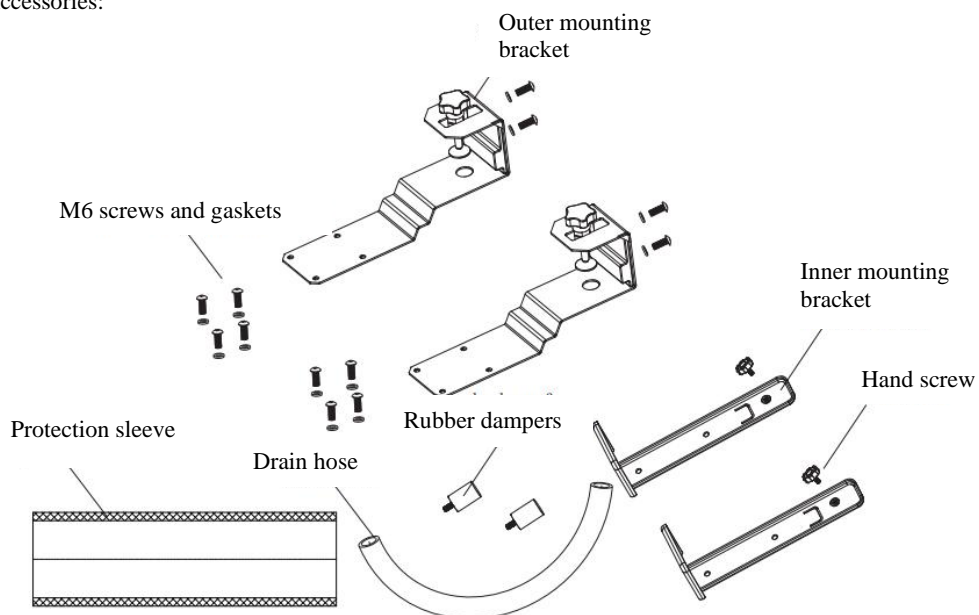
## 3. PACKING LIST

Name	QTY
Inside unit	1
Outside unit	1
Drain hose	1
Protection sleeve	1
Outer mounting bracket	2
Inner mounting bracket	2
Shock absorbing rubber dampers	2
Hand screws	2
M6 screws and gaskets	12

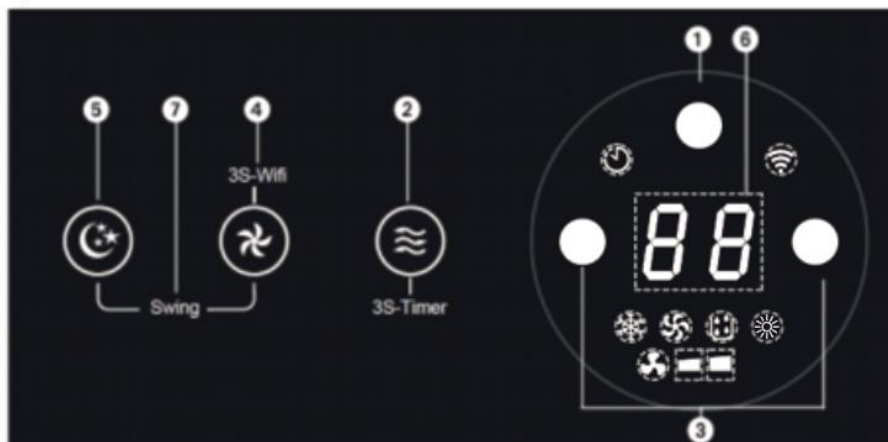
## 4. PRODUCT DEFINITION



Accessories:



## 5. CONTROL PANEL



### ① Power

Press this button to turn the device on and off.

When the air conditioner is switched on for the first time, it will select the mode according to the temperature of its surroundings. When the surrounding temperature is high, it turns on cooling mode with a default temperature of 22 °C, and when the surrounding temperature is low, it turns on heating mode with a default temperature of 24 °C.

### ② Mode

Press this button to select between cooling, heating, fan, and dehumidification.

When the air conditioner is on or in standby mode, pressing this button for 3 seconds will turn the timer on/off.

### ③ Up and down buttons

In cooling or heating mode, press the buttons to choose a temperature between 16 and 30 °C.

In timer mode, press the buttons to adjust the time on the timer or to turn it on/off.

Press the buttons at the same time to switch between °C and °F.

### ④ Fan speed

Press the button to choose between low or high fan speed.

### ⑤ Sleep mode

Press the button to turn sleep mode on/off. The display will show “SL”. After 20 seconds, all lights and the digital display will turn off and the air conditioner goes to sleep. The indoor unit’s fan will continue to run at low fan speed.

### ⑥ Display

Check the current set temperature and timer from this display.

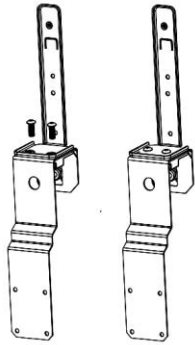
### ⑦ Oscillation

Press the fan speed and sleep mode buttons at the same time to turn oscillation on/off.

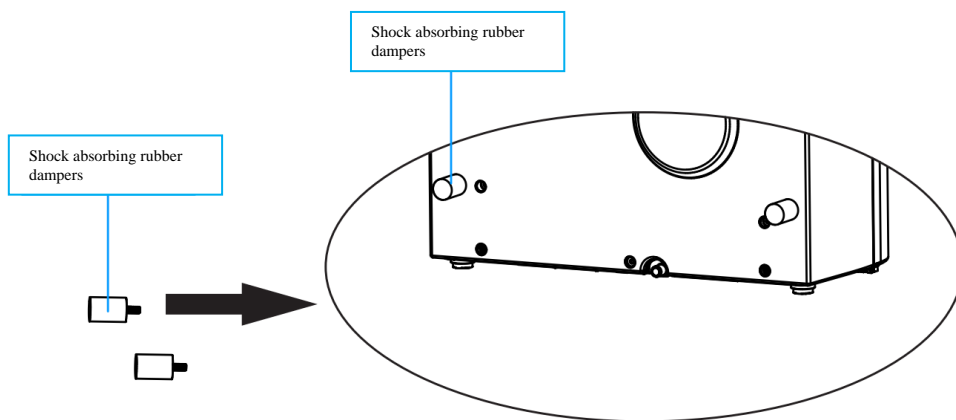
## 6. INSTALLING THE AIR CONDITIONER

1. Unpack the machine and its accessories and check that the hose between the indoor and outdoor unit is properly connected. Also check that the condensation drainage hole has a rubber cover. Finally, check that all accessories are included.

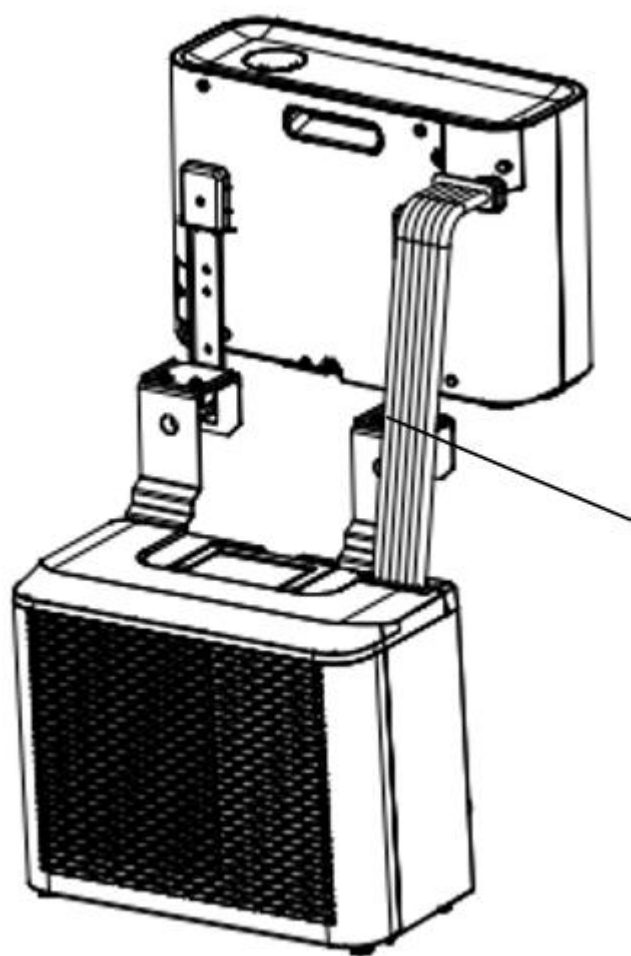
2.1 Assemble the accessories as shown in the picture below. Connect the outer bracket to the inner bracket by tightening the M6 screws. This will become the carrying bracket.



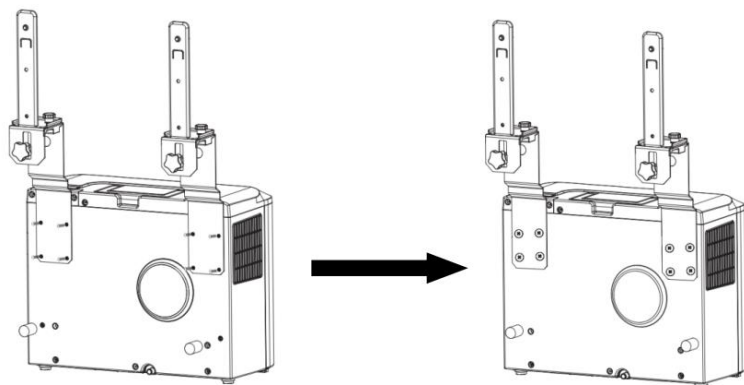
2.2 Place the shock absorbing rubber dampers on the back of the outdoor unit.



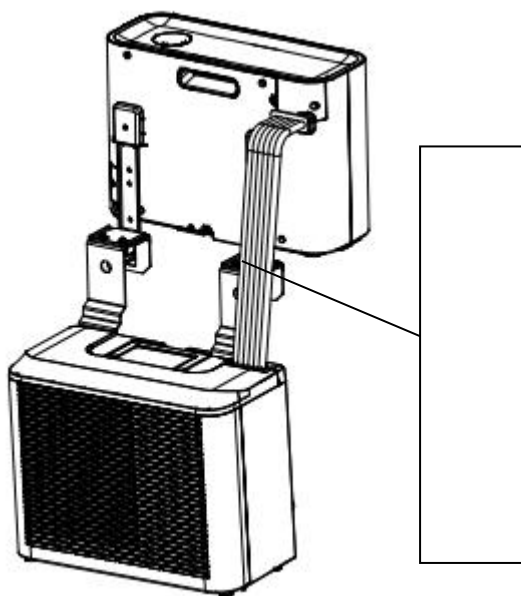
2.3 Install the brackets as shown in the figure below. Fasten the indoor and outdoor units to the brackets to join the two units. To secure the units to the bracket, fasten the M6 screws in their appropriate holes.



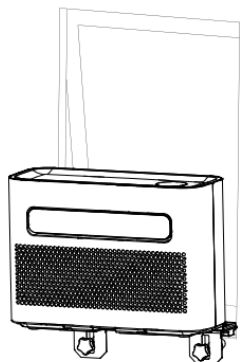




2.4 Fasten the indoor unit to the bracket and tighten securely. Next, wrap the protection sleeve on the hose between the outdoor and indoor unit. (See the illustration below).



2.5 Mount the complete unit in the caravan window and tighten the bracket securely.



## 7. ERROR CODE LIST

If the device does not work at all or works poorly:

Check if an error code is visible in the display and check to the table below for a solution. If no error code is visible on the display, check the error code table for a possible solution.

Error codes		
Error code	Cause	Solution
FL	Water full	Take off the rubber cap and empty the condensation water
E1	System temperature sensor is faulty	Replace the system temperature sensor
E2	Room temperature sensor is faulty	Replace the room temperature sensor
EF	Indoor motor is faulty	Replace the motor
Ec	Over-heating	Turn off the unit and wait for 15–30 min (the surrounding temperature is $\leq 40^{\circ}\text{C}$ )
EA	Abnormal reversing in the 4-way valve	Please contact a professional for service
E4	Freezing	Check that the air outlet is not blocked, keep the air vent open

## 8. TROUBLESHOOTING GUIDE

Troubleshooting guide		
Problem	Cause	Solution
The device does not turn on	No power	Turn on the power
	Damaged power outlet	Turn off the power and check/repair the power outlet
	Unknown reason	Contact the reseller or a certified professional
Little air flow or poor cooling /heating effect	Low fan speed is selected	Select high fan speed
	The air filter is dirty	Check and clean the filter
	The air inlet or outlet of the indoor unit is blocked	Check that the inlet/outlet is not blocked and remove any obstacles
	The air inlet or outlet of the outdoor unit is blocked	Check that the inlet/outlet is not blocked and remove any obstacles
	The surrounding temperature is too low or too high	The surrounding temperature must be between $10^{\circ}\text{C}$ and $35^{\circ}\text{C}$
	Not enough voltage from the power outlet	Consult an installer or use a different power outlet
Air flow but no cooling/heating effect	The device runs in fan-only mode	Select the cooling/heating mode (A/C)
	The cooling mode has turned off automatically	Wait for 3–5 minutes until the thermostat switches on again

Abnormal sound or vibration	The mounting brackets are not properly installed on the appliance, or the mounting screws are not tightened enough	Check that the mounting bracket is tight and tighten the mounting screws
Water is leaking from the indoor unit	The rubber cover on the bottom of the indoor unit is missing or loose	Check or replace the rubber stopper
	The appliance is not at level	The device must be mounted horizontally (maximum angle < 3°)
The appliance has an odour	There is a serious problem	Switch off the appliance immediately and contact the reseller or an authorized professional

## 9. MAINTENANCE

### Instructions:

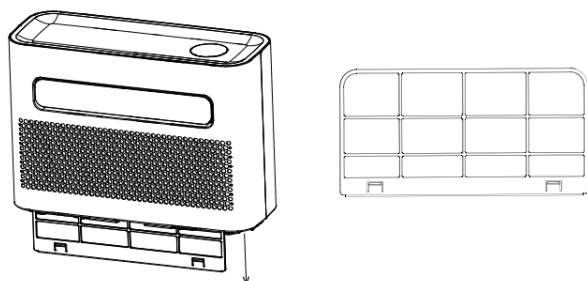
- 1) Ensure the appliance is turned off and unplugged from the power outlet.
- 2) Do not use petrol or other hard chemicals to clean the appliance.
- 3) Do not submerge in water to clean the appliance.
- 4) If the air conditioner is damaged, please contact the reseller or an authorized professional.

### Cleaning

**Caution:** Unplug the power cord before cleaning or performing maintenance.

#### 1. Air filter

- It is important to regularly remove the dust from the filter.
- Remove the filter as shown in the picture below.
- Clean the filter with lukewarm tap water and / or a vacuum cleaner to remove any dirt from the filter.
- Do not use water hotter than 40 °C for cleaning and do not leave the filter in the sun.
- Make sure the filter has dried before putting it back into the air conditioner.

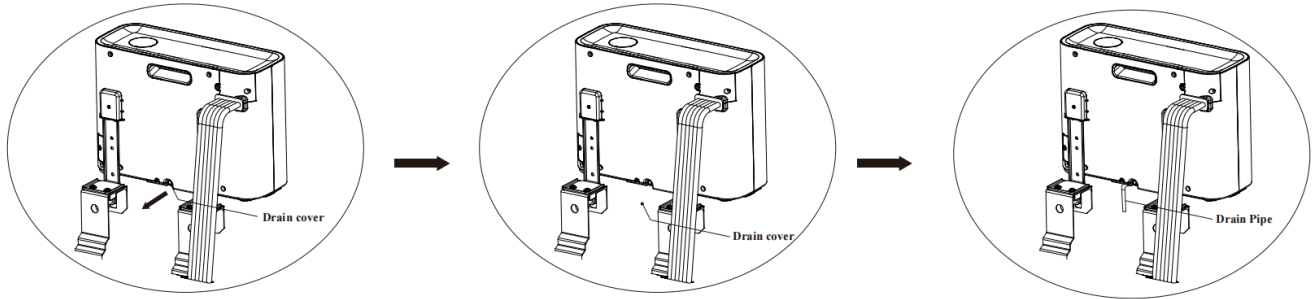


#### 2. Clean the surface of the air conditioner

- Wipe the surface with a neutral cleaning agent and a wet cloth.
- Dry the surface thoroughly with a dry cloth.
- Do not allow water or cleaning agent to enter the appliance.
- Do not use aggressive cleaning agents and/or petrol to clean the appliance.

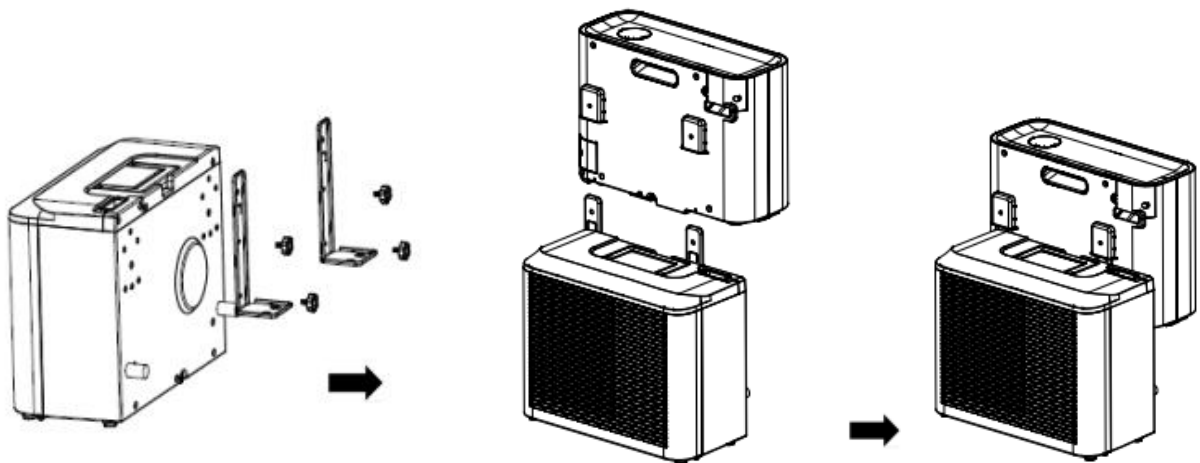
## Storage

If you are planning to not use the appliance for a long time, please remove the rubber covers from the drainage holes at the bottom of both units and drain all the condensation water to an appropriate container.



1. Remove the rubber cover from the indoor unit and connect the drainage pipe to drain the condense water into a container.
2. Run the air conditioner in fan mode to dry the inside of the unit.
3. Turn off the appliance and unplug it from the power outlet.
4. Wash the air filter and put it back in.
5. Remove the air conditioner from the window.
6. Remove the rubber cover from the outdoor unit and connect the drainage pipe to drain the condense water into a container.
7. Remove the brackets from the air conditioner and install the brackets on the units as shown in the figure below. Then store the unit against a wall.
8. Store the air conditioner in a cool and dry place.
9. We recommend that you put the air conditioner back in its packaging for storage. This prevents dirt and dust from collecting on the air conditioner.

\* Before moving or reassembling the air conditioner, make sure that the condensation water has been drained.



## 10. SMART HOME WIFI CONNECTION GUIDE

Install App

Download the "Smart Life" app from the Play Store (Android) or App Store (iOS).



Scan QR code

### Register

If you do not have a Smart Home account, register and sign in with a verification code sent by SMS.

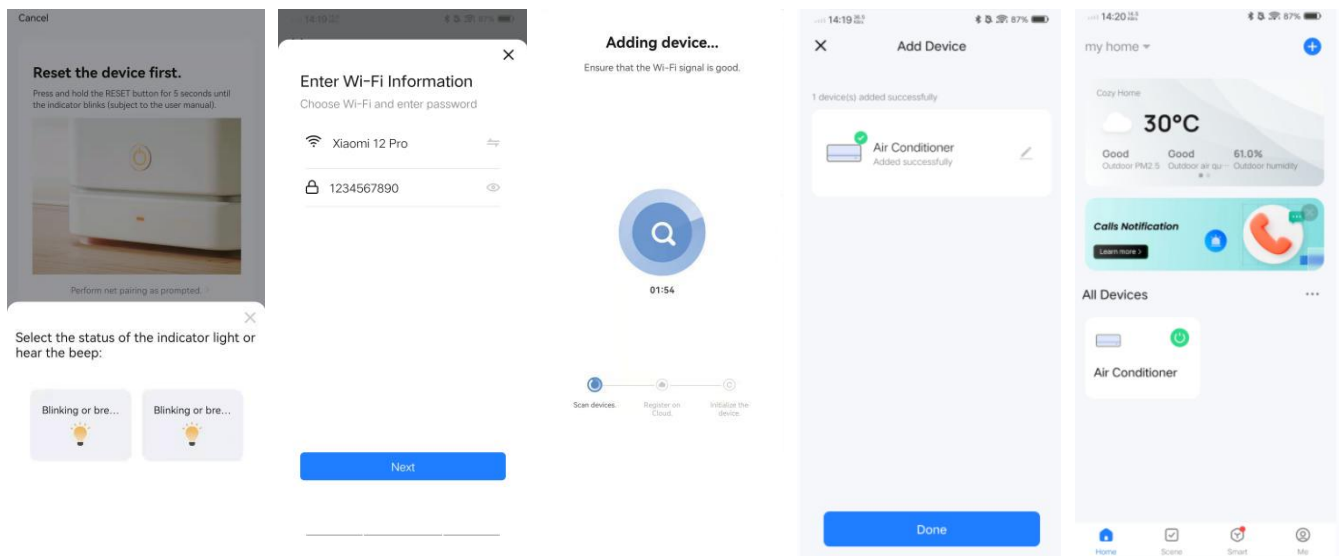
To register:

1. Go to the registration page.
2. The system automatically recognizes your country/area. You can also select your country code manually. Enter your mobile phone number or email address and press "Next".
3. If you choose to register via phone number, enter the verification code you received by SMS. Set a password according to the instructions and press "Confirm" to finish your registration.

Two side-by-side screenshots of the 'Register' screen in the Smart Life app. Both screens have a back arrow in the top left corner. The left screen shows a dropdown menu with 'China' selected, a text input field for 'Mobile Number/Email' containing a single character 'I', and a blue button labeled 'Get Verification Code'. The right screen shows the same dropdown menu, but the text input field contains 'XXXXXXXXXX' and has a small 'x' icon on the right. It also features the 'Get Verification Code' button.

### Add device through WiFi

1. Turn the air conditioner on and have it in standby mode. Press the "FAN" button for 3 seconds to enter WiFi-pairing mode.
2. Open the Smart Life app and press "+" in the upper right corner to add a new device through WiFi.
3. Make sure that the air conditioner's indicator light is flashing (2 times per second) and press "Confirm light is rapidly flashing" on your mobile phone.
4. Select your Wi-Fi network (note: network must be 2.4 Ghz) and enter the password. The pairing process will start, and the air conditioner will connect to the app.
5. After successfully configuring the devices, the air conditioner will be shown on the smart home page. Press it to see its controls.



### Connecting using Bluetooth

1. Before connecting, make sure the air conditioner is in standby mode.
2. Open Bluetooth on your phone.
3. When the air conditioner is powered on and in pairing mode, it will pop up automatically after a moment in the app. Press the "Add" button to connect.
4. Enter your Wi-Fi and the password and click "Next" to continue (note: network must be 2.4 Ghz).
5. Enter the air conditioner's control page after the loading bar is finished.
6. Press the "Done" button to go back to the home page.

